

A **PURAVANKARA**® COMPANY

**PROVIDENT**®



**GLORY OF NATURE**  
**CHARM OF COMFORT**



**PALM  
VISTA**

SHILPHATA, MUMBAI

# PURAVANKARA PIONEERS IN DEVELOPMENT



**T**he Puravankara Group is one of India's leading listed real estate companies headquartered in Bengaluru. The company embarked on its mission of offering quality homes to millions, in 1975. The Puravankara Group is the pioneer in bringing Foreign Direct Investment for real estate in the country. At the Puravankara Group's core, there is a focus on quality which attributes to the brand's success.



A customer first approach



Industry leading practices and revolutionary construction methods



Delivery of every project within the promised timelines



## PROVIDENT A NEW FOCUS

**P**rovident Housing Limited is a subsidiary of the Puravankara Group founded in 2008. The company was established to ensure that quality homes are accessible to first time homeowners. This makes the entire experience of finding a home that meets the dreams and expectations of every customer, an unforgettable one.



## OFFERING AN EXCEPTIONAL LIFESTYLE ACROSS 9 MAJOR CITIES



## PROVIDENT LEADERS IN EVOLUTION

Provident is one of the first developers in the nation to use new age construction methods, the brand pioneered using pre-cast construction technology in the country. This not only improved the quality of construction, but also increased the efficiency of the construction process, saving time.



**3 million** square feet in pre-cast construction



Developed **20 million** square feet across 9 cities



Delivered over **3,000 homes**



Every project has garnered a high **velocity** in sales after launches



**45+ years** of experience



**60+** projects



**50,000** happy customers



**35,000+** homes delivered



One of the first real estate companies in India to receive an **ISO certification**



**OPEN YOUR  
DOOR TO PARADISE  
EVERY DAY**

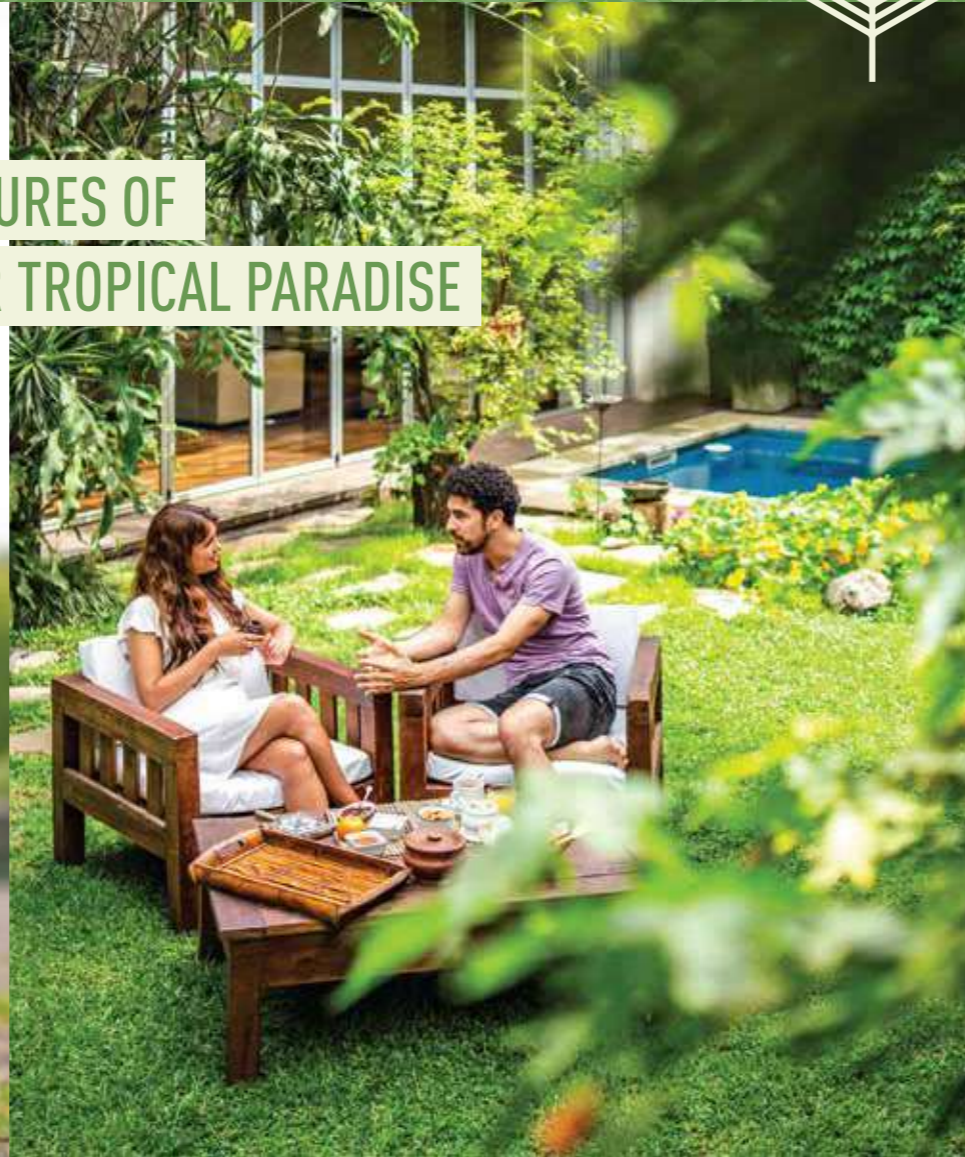
**E**mbodying the refreshing essence of nature, Palm Vista is nestled amidst a fast-paced city. It is a place that is rich in energy, filled with the enlivening spirit and freshness of the natural environment.

Palm Vista is a secure oasis that spans over 16 acres. Every space in this gated community is designed to transport you to a remote tropical paradise, with lush greenery and a pleasant aura encapsulating your every step. Walk into Palm Vista and experience the refreshing and inspiring serenity of the tropics.





## FEATURES OF YOUR TROPICAL PARADISE



### Integrated Lifestyle

Step into a self-sufficient place that brings the best the world has to offer closer to you. From running daily errands and getting groceries to going on a shopping spree and enjoying dinner with friends and family, everything you need is just a stone's throw away.

### A Recreational Paradise

Sprawling across this green haven are 60+ world class amenities that consist of both indoor and outdoor offerings. These exceptional amenities cater to people of all ages, from toddlers to senior citizens. They are focused towards providing leisure and entertainment to everyone who experience them.





NATURE'S  
OWN ADDRESS

**Secure Open Spaces**

Palm Vista is designed to bring you closer to nature. With vast open spaces encompassing the gated community, you will never miss out on a chance to experience nature at its blissful best.

**International Topiary of Palm Trees**

True to its name, Palm Vista hosts over 30+ different varieties of palm trees across the development. Every corner in this secure community is blessed with thriving greenery. Much like the tropics, life here is an amalgamation of peace, beauty, and enriching experiences.



## SHILPHATA A NEW HORIZON

Shilphata is a locality that is perfectly placed to become the next economic powerhouse in the region. The planned development for both the public and private sector, make Shilphata a place interestingly poised for a great uptick in value.

Shilphata is becoming more accessible by the day and is a great investment option. There are many reasons why this is the right time to purchase in the neighbourhood.



The proposed Kalyan-Taloja metro line is expected to reduce the journey timings by 50 to 75%. This will reduce road traffic congestion by up to 35%. The Vasai-Panvel Rail Expansion is a 70 Kms railway line that will enhance connectivity to Panvel and Vasai.

Kalyan-Dombivli is a city that has been shortlisted to be developed as a Smart City by the Government of India. All the planned changes are set to radically transform the area, in matters of infrastructure and economy.

## FORTHCOMING METRO CONNECTIVITY

## LIVE IN A SMART CITY







## ENHANCED MOTORWAY CONNECTIVITY

A great network of roads is being developed in the area which will reduce the travel time to important industrial and commercial hotspots in Mumbai.



### Shilphata Junction

The junction will soon have an underpass along the Mumbai-Panvel Road and a flyover on the Kalyan-Shil Road, reducing congestion and increasing mobility.

### Kalyan-Shil Road

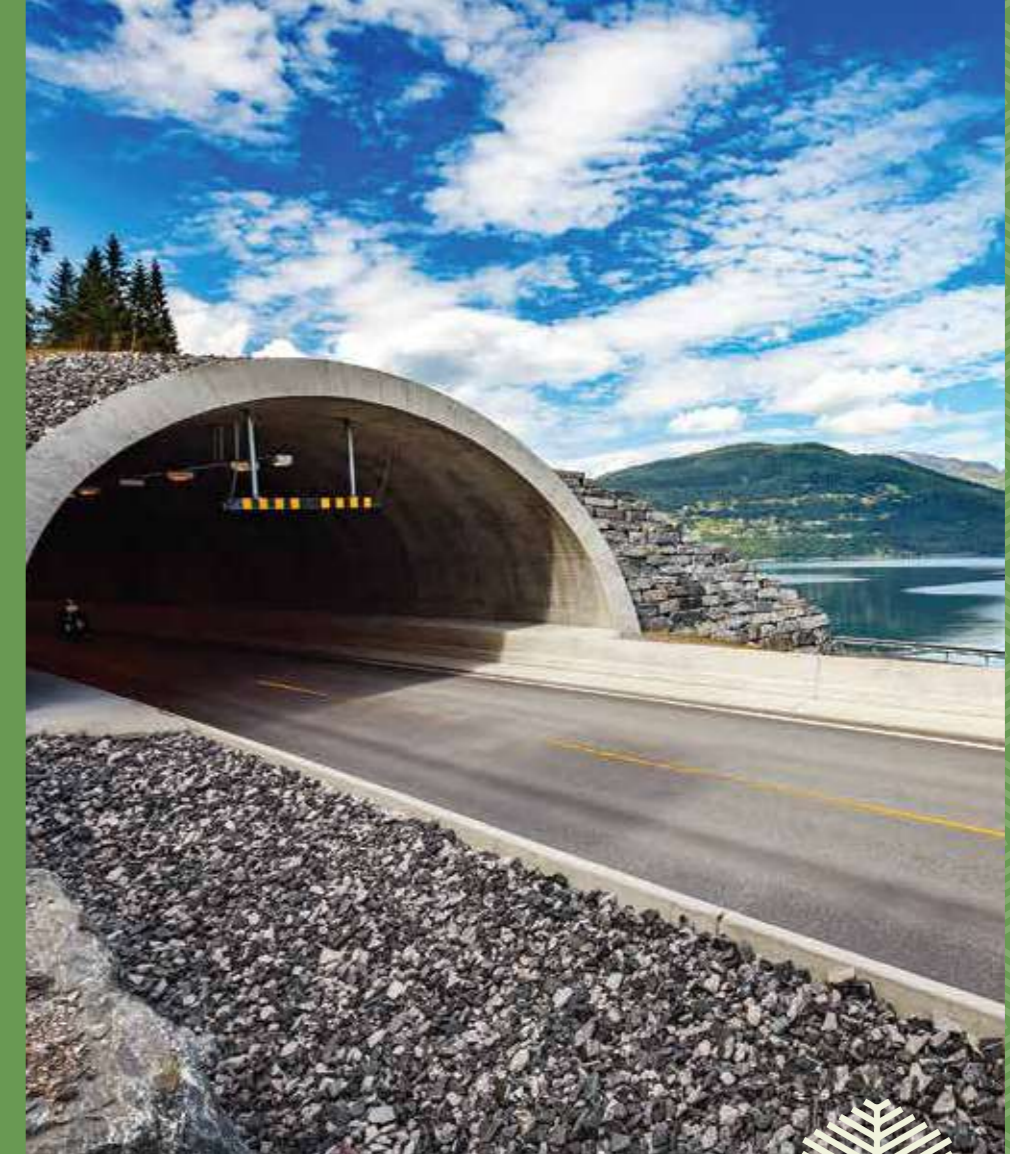
The current arterial lifeline of this locality is getting wider through a 30 meters road and with a new flyover which connects to Airoli-Katai tunnel and MMC.

### Multimodal Corridor

The 126 Kms long corridor planned from Virar to Alibaug and will reduce the travel time by 50%.

### Airoli-Katai Tunnel Road

The proposed tunnel will directly connect Airoli and other central suburbs through the Parsik Hills.





## CENTER OF CONVENIENCES

### Educational Institutions

- Lodha world School - 4.8 Kms
- Pawar Public School - 6.4 Kms

### Entertainment & Leisure

- Xperia Mall - 4.6 Kms
- R Mall upcoming - 7 Kms

### Convenience / Retail

- Thane - 15.9 Kms
- Bhiwandi - 23.4 Kms
- Airoli - 13 Kms
- Taloja - 15.5 Kms
- Panvel - 20.5 Kms
- CBD Bellapur - 18.7 Kms
- Proposed International Airport - 22 Kms
- D Mart - 9.8 Kms
- Mahape - 6.5 Kms
- Dombivli - 11.5 Kms

### Healthcare Institutions

- Hopewell Multispecialty Hospital - 6.7 Kms
- AIMS Hospital - 10.6 Kms
- KAMAT Hospital - 10.4 Kms
- SRV Mamata Hospital - 10.5 Kms
- Orion Multispecialty Hospital - 10.9 Kms



## THE KEY TO EXCEPTIONAL LIVING AMENITIES AT PALM VISTA

This tropical paradise brings to you over 60 extraordinary amenities that are state of the art. An immense variety of offerings ensures that Palm Vista has something for everyone to enjoy, the amenities are designed for people of all ages. Everyone from a toddler to a senior citizen will find something that interests them. Turn the page to explore life at Palm Vista.



## NATURE'S CHOICE

Immerse yourself in a range of outdoor amenities that help you rediscover nature.



Reflexology Path



Sensory Garden Walking Track



Aroma Garden



Outdoor Workstations



Yoga and Meditation Deck



Pet Park

## THE ACTIVE CHOICE

Stay energetic with amenities that keep you healthy and rejuvenate your life every day.



Cycling Track



Archery Arena



Gymnasium



Jogging Track



Multi Play Court



Semi-Olympic Sized Swimming Pool



## A CHILD'S CHOICE

Every youngling would be excited to enjoy these amenities that are designed to inspire their imagination.



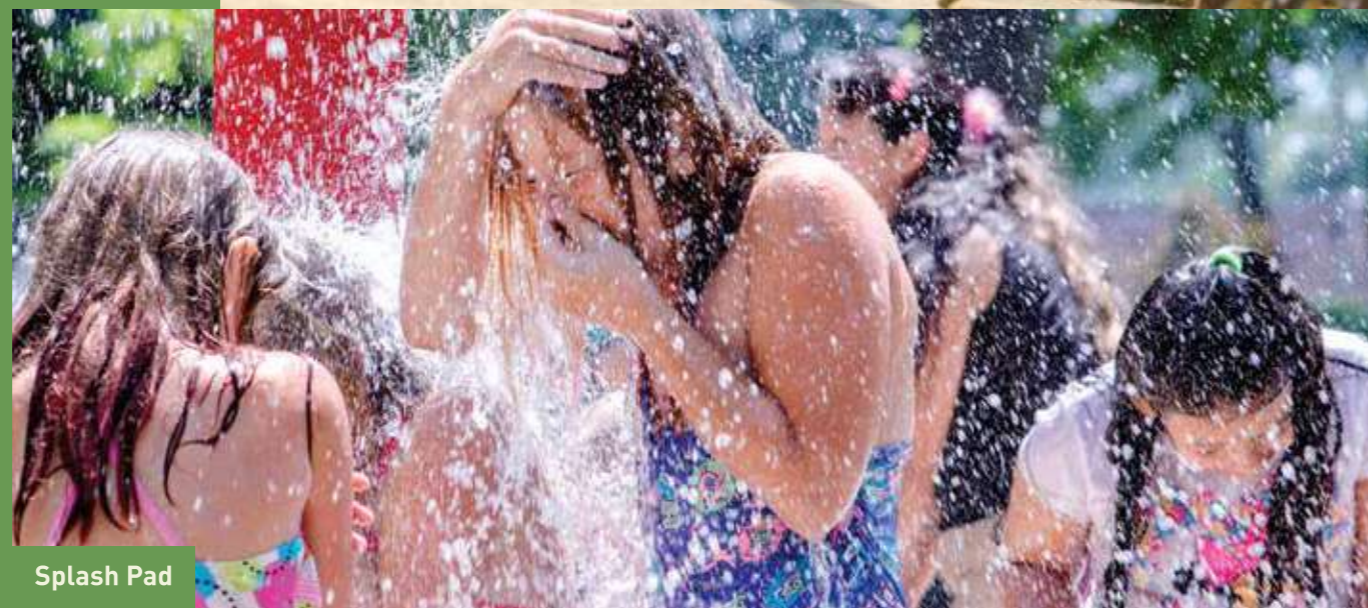
Skating Zone



Kids Play Area



Day Care Area



Splash Pad



Kids Pool



Tricycle Track



## A SOCIALITE'S CHOICE

Open spaces and amenities that are designed to facilitate and liven up gatherings, making your social interactions fulfilling.



Barbeque Pavilion



Poolside Party Lawn



Senior Citizen Area



Gazebo



Music Pavilion



Multipurpose Hall





## MAKING THIS TROPICAL HAVEN A SUSTAINABLE ONE

**P**alm Vista will use and harvest the natural resources. From the harvesting of rainwater and sunlight, the development will make the best use of these resources making your lifestyle a more sustainable one.





# AN INDULGENT WORLD MASTER PLAN

## ★ GROUND LEVEL

1. Jogging/Walking track
2. Plantation island
3. Kids play area
4. Climbing wall
5. Parent's seating
6. Cricket net
7. Tricycle track
8. Ledge seating
9. Multi play court
10. Spectator's seat
11. Floor games
12. Cove seats
13. Layered plantation
14. Sensory trail
15. Reading/working cove
16. Secret garden
17. Labyrinth
18. Cafe deck
19. Seating decks
20. Cafe spill over
21. Wifi Lounge
22. Senior's deck
23. Senior's spill over lawn
24. Connecting staircase

## ★ PODIUM LEVEL

1. Upper deck
2. Water edge
3. Main pool
4. Kid's pool
5. Lower deck
6. Lounge deck
7. Gazebo
8. Connecting staircase
9. Walking track
10. Putting lawn
11. Trellis walk
12. Reflexology pathway
13. Yoga deck
14. Activity lawn(play and tents)
15. Palm edge
16. Music Pavilion
17. Cove seats
18. Festival Lawn
19. Amphitheater
20. Flag pole deck
21. Spill over deck
22. Congregation lawn
23. Seating corner
24. BBQ Pavilion



ELEVATE TO THE  
EPITOME OF LUXURY





SWIMMING POOL

## GREAT RECREATIONAL AVENUES



TRELLIS WALK



MULTIPLAY COURT



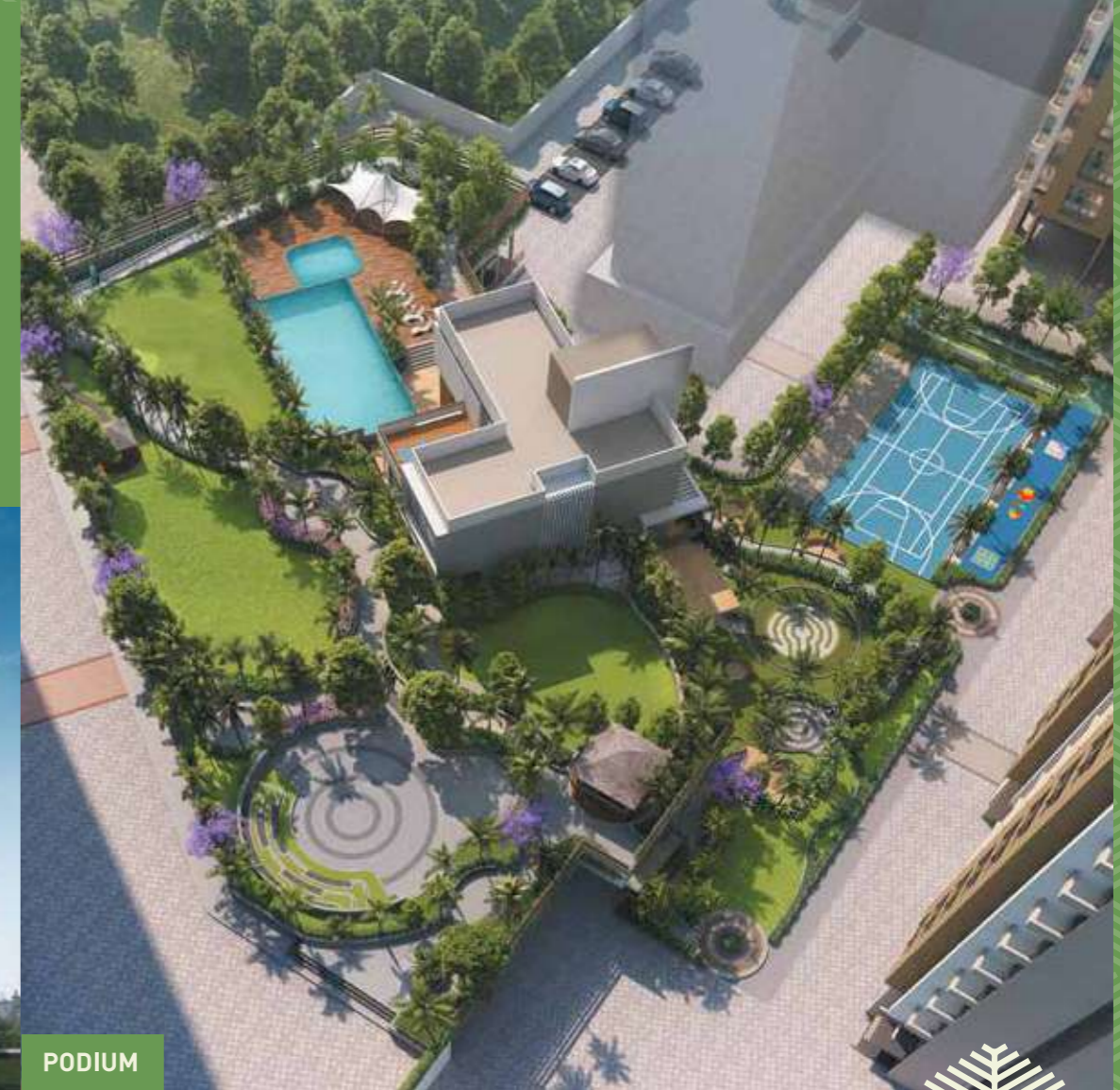


CLUBHOUSE

## CANVAS OF ENJOYMENTS



BUILDING VIEW

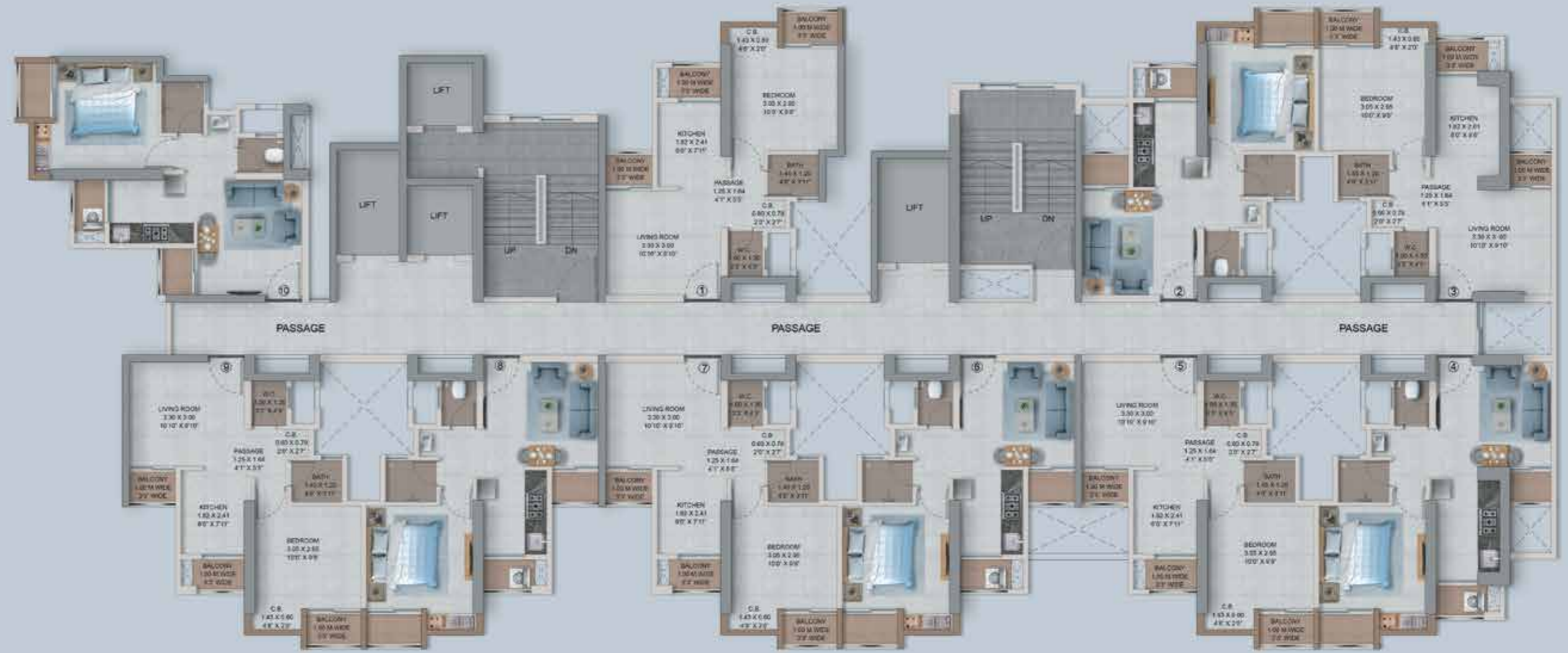


PODIUM

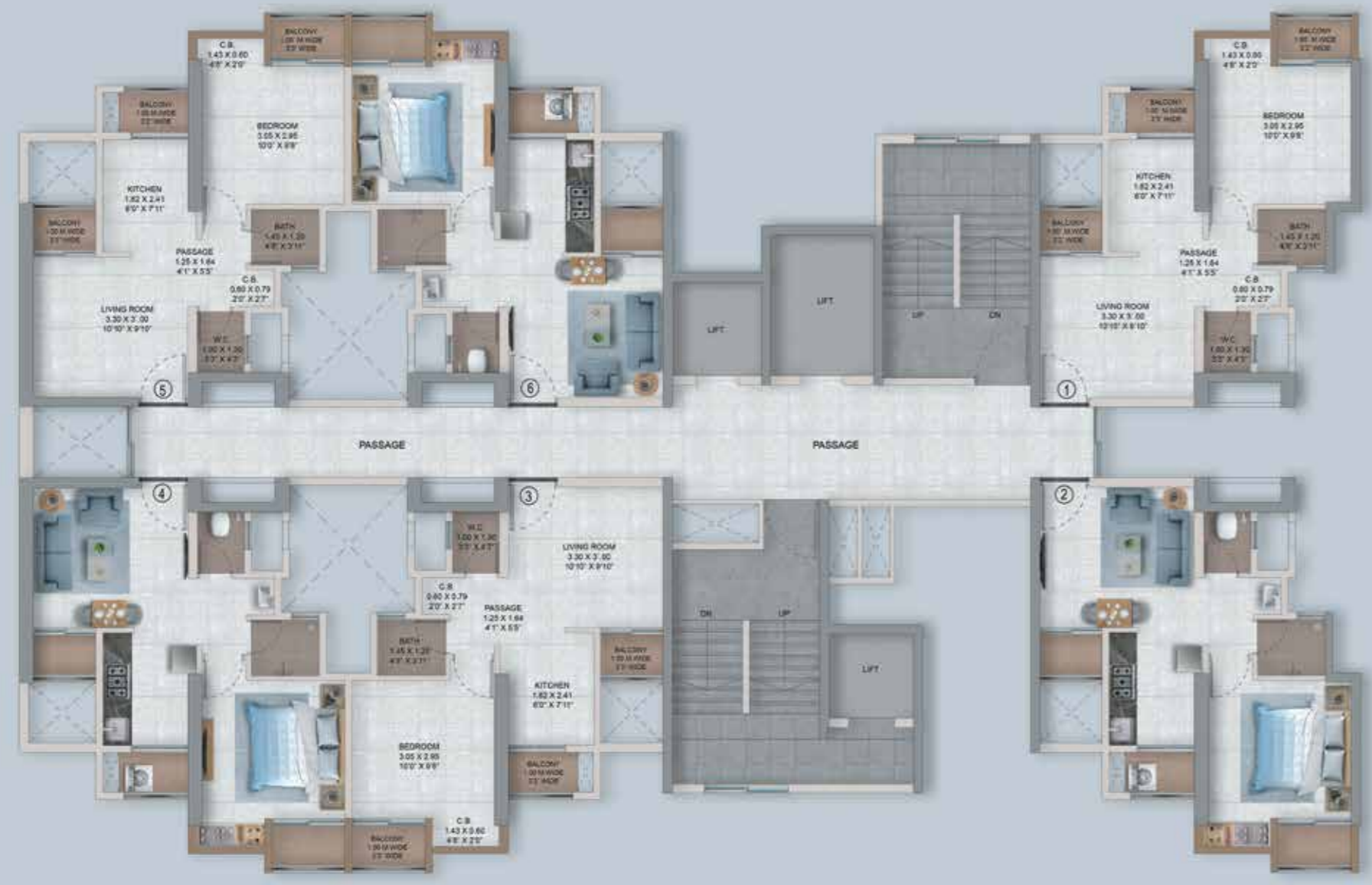
A GREATER SPACE  
FOR LIFE  
FLOOR PLAN



TYPICAL FLOOR PLAN B1



TYPICAL FLOOR PLAN B2



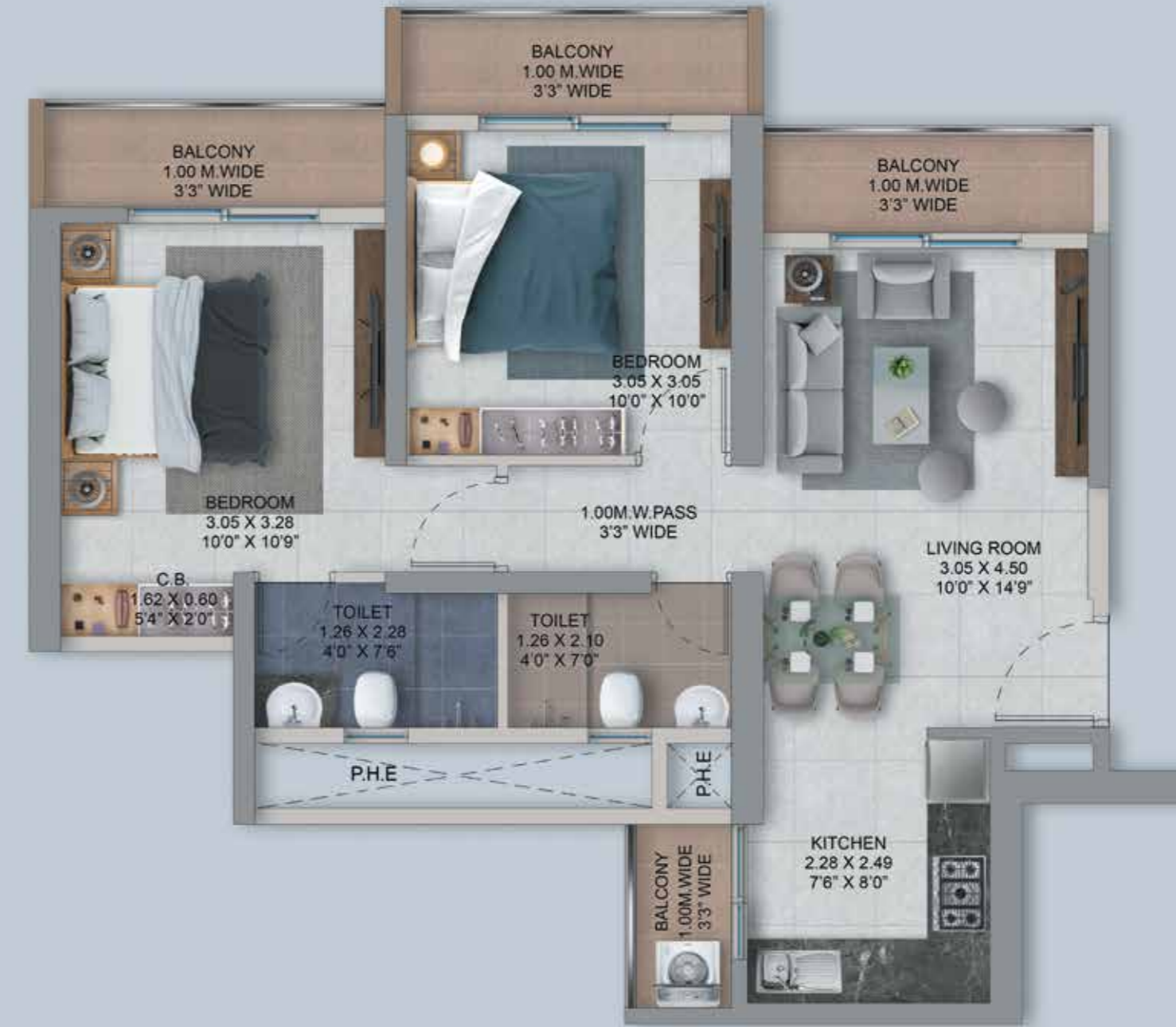
TYPICAL FLOOR PLAN D4



### 1 BHK



### 2 BHK



## 2.5 BHK





**PROVIDENT<sup>®</sup>**

Site Address: Provident Palm Vista, Main Kalyan-Shilphata Road, Shilphata, Mumbai - 421204, Maharashtra.

**Call: 022-6480 7900**

The photographs of the interiors, surrounding views and location may have been digitally enhanced or altered and do not represent actual or surrounding views. Standard fittings and finishes are subject to availability and vendor discretion. The images shown in the brochure are not standard and will not be provided as a part of an apartment. The information contained herein is believed to be true but not guaranteed. The colours of the buildings are indicative. This is a reference document intended only to provide generic information and does not constitute an offer or contract.

MahaRERA NO P51700025841. For more information, visit <https://maharera.mahaonline.gov.in>.